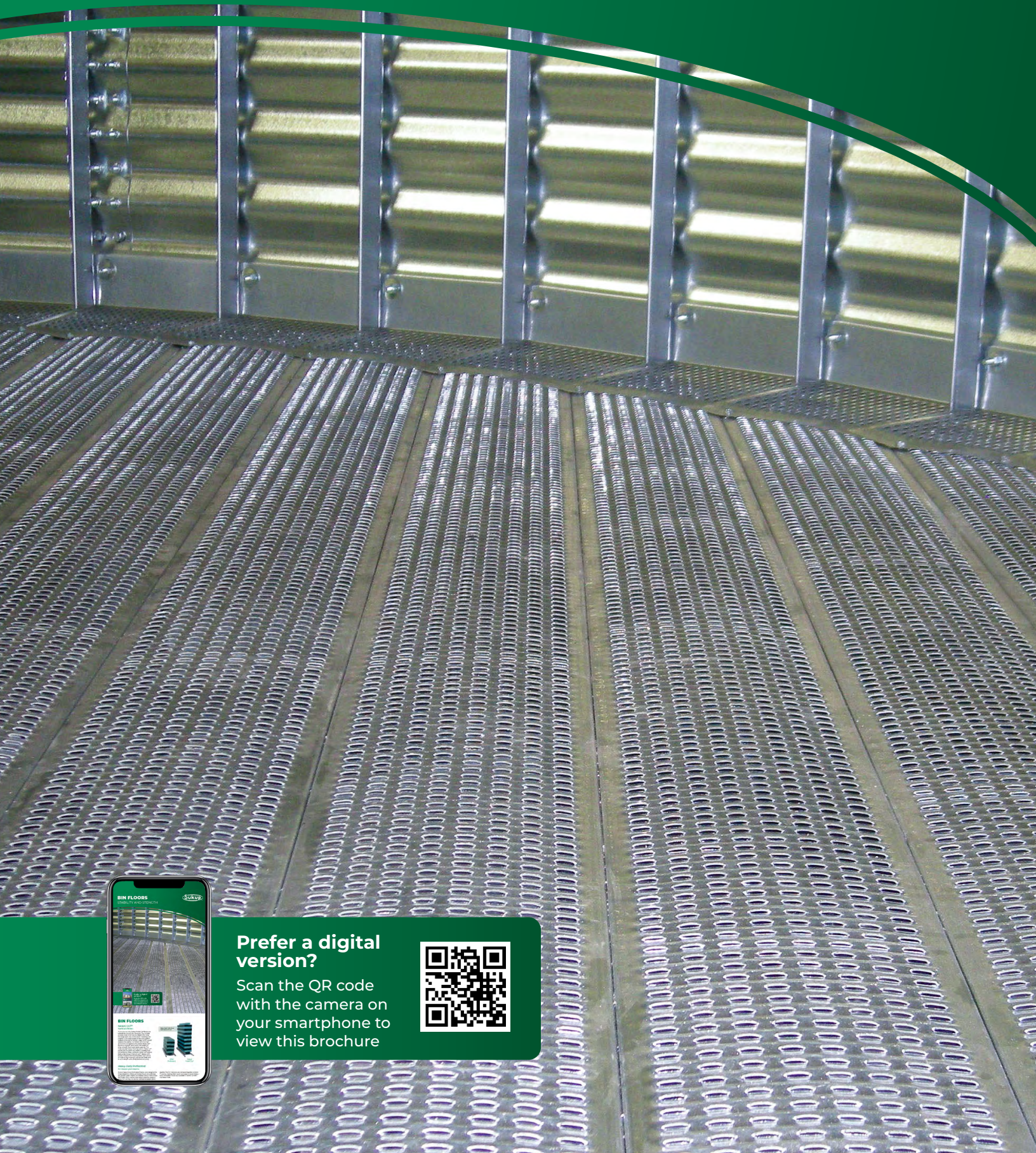


BIN FLOORS

STABILITY AND STRENGTH



**Prefer a digital
version?**

Scan the QR code
with the camera on
your smartphone to
view this brochure



BIN FLOORS

HAWK CUT®

TWICE AS STRONG

From corn to milo, Sukup Hawk Cut® floors are suitable for almost any size grain. Our unique process doesn't remove any steel in forming the large open area in the plank. Openings are created in the sloped sides of the corrugation, instead of the top or bottom ridge, which would weaken the planks. Combined with the high arch of the corrugation, this allows Hawk Cut® planks to support up to twice the weight of other smooth floors and resist cupping. The most popular Sukup flooring option, Hawk Cut® planks are smoother and easier to sweep than conventional chisel-cut floors. Hawk Cut® planks feature the Sukup Channel-Lok™ design with sturdy J-shaped interlocking sides. Each plank is made of high-strength, galvanized steel and is cut to length with computerized accuracy.

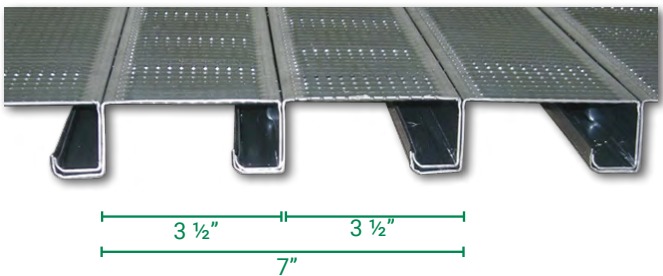
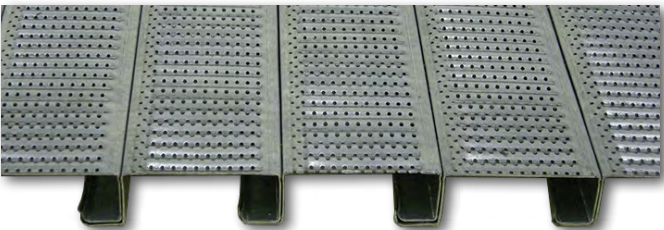


Heavy-Duty Perforated

For deeper grain depths

Sukup Heavy-Duty Perforated Planks were designed for those situations where perforated floors are preferred, but greater grain depths are desired. Sukup Heavy-Duty Perforated Floor planks have weight-bearing support every 3½", so they are able to withstand deeper grain

depths. The 3½" sections are crimped together to form 7" planks, making them quick and easy to install. Heavy-Duty Perforated Floors are available in 0.094" or 0.05" diameter holes.



Designed Uses for Sukup Floors & Supports

Several options of Sukup Supports are available. To select the proper support to match your Sukup Bin Floor, refer to the chart.

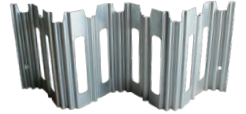
	HAWK CUT®	HEAVY-DUTY PERFORATED
Z-Post	x	
Super Supports™	x	
Flat Top Super Supports™		x
SuperWave® Supports	x	x

FLOOR SUPPORTS

SUPERWAVE® Supports

Sheet Metal Support

The Sukup SuperWave® Support is a sheet metal support designed to be used with 3½" or 7" floor planks of any style. They are ideal for Sukup's Heavy-Duty Perforated flooring, but also are a great match for Sukup Hawk Cut® or regular perforated planks. The "wave" shape of this support creates more surface area to support the floor planks, while at the same time making the support more stable than other sheet metal supports. Flanges in the top portion of the Sukup SuperWave® Support fit under the crowned area of the floor plank at a 45° angle, providing support for the planks over a larger surface area. Sukup SuperWave® Supports are 20 gauge and available in 13¼" height. Factory tests show a SuperWave® is at least 1.5 times stronger than a Super Support™.



Z-POST FLOOR SUPPORT

Precision-Engineered Support

University tests show that the most popular Sukup supports, the Z-Post Floor Supports, are 40-65% stronger than U-Shaped floor supports*. Rock solid Z-Posts are reinforced by numerous corrugations and strengthened by Z-shaped bends. The exclusive "Z" shape gives 60% more inches of load bearing support than typical U-shaped posts. The diagonal portion of the Z-Post provides additional support across the center of the floor plank for extra strength, which is required for taller bins.

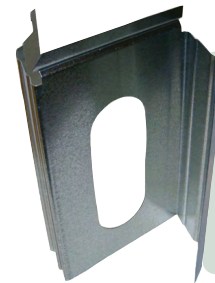
Greater Stability

The Sukup Z-Post covers a larger area, giving a wider, more solid base. Notched sides and the self-tightening spring action lock the supports in place, so they don't move around under the weight of the grain.

More Uniform Airflow

The Sukup Z-Post offers the largest air opening of any post support on the market. The design of the Sukup Z-Post also helps to distribute drying air more evenly throughout the plenum area. Sukup Z-Post supports are available in 13 ¼", and 17" overall heights.

**Information based on independent university tests conducted in 1996.*



Notches on Sukup Z-Post Supports lock the supports in place, making installation a snap and forming a more stable base.

Super Supports™

Fast and easy to install, this style of floor support from Sukup really is "super". The welded-rod frame of Sukup Super Supports™ lets air flow freely throughout the bin plenum area and the open design provides much better heat distribution, which makes for more efficient drying. The unique angle iron base provides stability. Sukup Super Supports™ can be used with most Sukup bin floors and provide excellent airflow, easy installation, and an extra strong design. They are available in 13 ¼", and 17" heights. Painted finish shown at right is optional.



Super Supports™



Flat Top Super Supports™

Flat Top Super Supports™

Flat Top Super Supports™ are designed for use with Heavy-Duty Perforated floors. They install quickly and provide solid support. They are available in 13¼" and 17".

Bridging Support

Sukup offers a bridging system that bridges the gap between floor supports caused by an unload auger; providing enhanced support for your bin floor. The solid steel construction and welded legs provide a sturdy, long-lasting support and the simple design makes installation a breeze.



SUKUP FLASHING

Heaviest on the Market

Sukup flashing gives 10" of coverage from the bin wall. The width allows the flashing to fit easily around even smaller diameter bins. It's also the heaviest flashing on the market—20 gauge. Sukup flashing is available in Slim Cut, .094" perforated, and .050" perforated. Hi-back or Low-back is available for various floor supports. Sukup Slim Cut flashing is also available pre-punched for Sukup Airways®.

Flush Floor Aeration

Commercial Aeration Alternative

Sukup's Channel-Lok™ Flooring (Hawk Cut®, or Heavy-Duty Perforated) and supports install easily over concrete tunnels for an efficient, low-cost aeration alternative.



Hi-back



Low-back

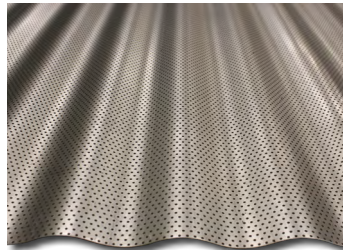


Perforated Flashing

Corrugated Flooring

Tunnel Aeration Alternative

Sukup offers a simple, corrugated flooring option for tunnel aeration. Corrugated galvanized steel sheets (44" L x 88" W with one corrugation overlap) are available solid or perforated. Installed over Flat Top Super Supports™, this flooring offers quick, simple tunnel aeration.

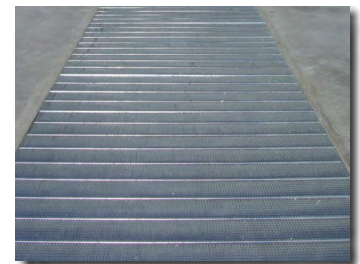


Corrugated Flooring

Square Pad System

Better Air Distribution

Sukup square pad systems constructed with Sukup Channel-Lok™ flooring offer improved air distribution and more airflow than aeration ducts.



Square Pad System

Important: Consult Sukup specifications for number and gauge of supports required at particular grain depths. Proper installation according to Sukup instructions on smooth, level concrete is essential. Sukup Manufacturing Co. floors carry a limited one-year warranty. Grain pressure can and may cause any floor to cup, especially in deeper grain depths (taller bins). Cupping does not constitute a structural floor failure under the Sukup limited warranty. Limited warranty is valid only when concrete is level and flooring is installed to Sukup Manufacturing Co. specifications. Refer to complete limited warranty for details.



Sukup Manufacturing Co. | www.sukup.com

Box 677 1555 255th St. | Sheffield, IA 50475-0677 | ph 641.892.4222
fx 641.892.4629 | info@sukup.com

Distribution Centers

Arcola, IL 61910
980 E. State Rte. 133
ph 217.268.3026
illinois@sukup.com

York, NE 68467
2311 N Division Ave
ph 402.534.1108
nebraska@sukup.com

Cameron, MO 64429
7426 NE 352nd St.
ph 816.649.2226
missouri@sukup.com

Defiance, OH 43512
7724 Rte. 66 N.
ph 419.784.9871
ohio@sukup.com

Jonesboro, AR 72403
204 Best Industrial Dr.
ph 870.932.7547
arkansas@sukup.com